

NEWS RELEASE

Ashley National Forest

*Forest Supervisor's Office
355 North Vernal Avenue
Vernal, Utah 84078*



For Immediate Release

Louis Haynes at 435-781-5105

Closure Order Lifted in the Vicinity of Center Park Swift Creek Basin Remains Closed

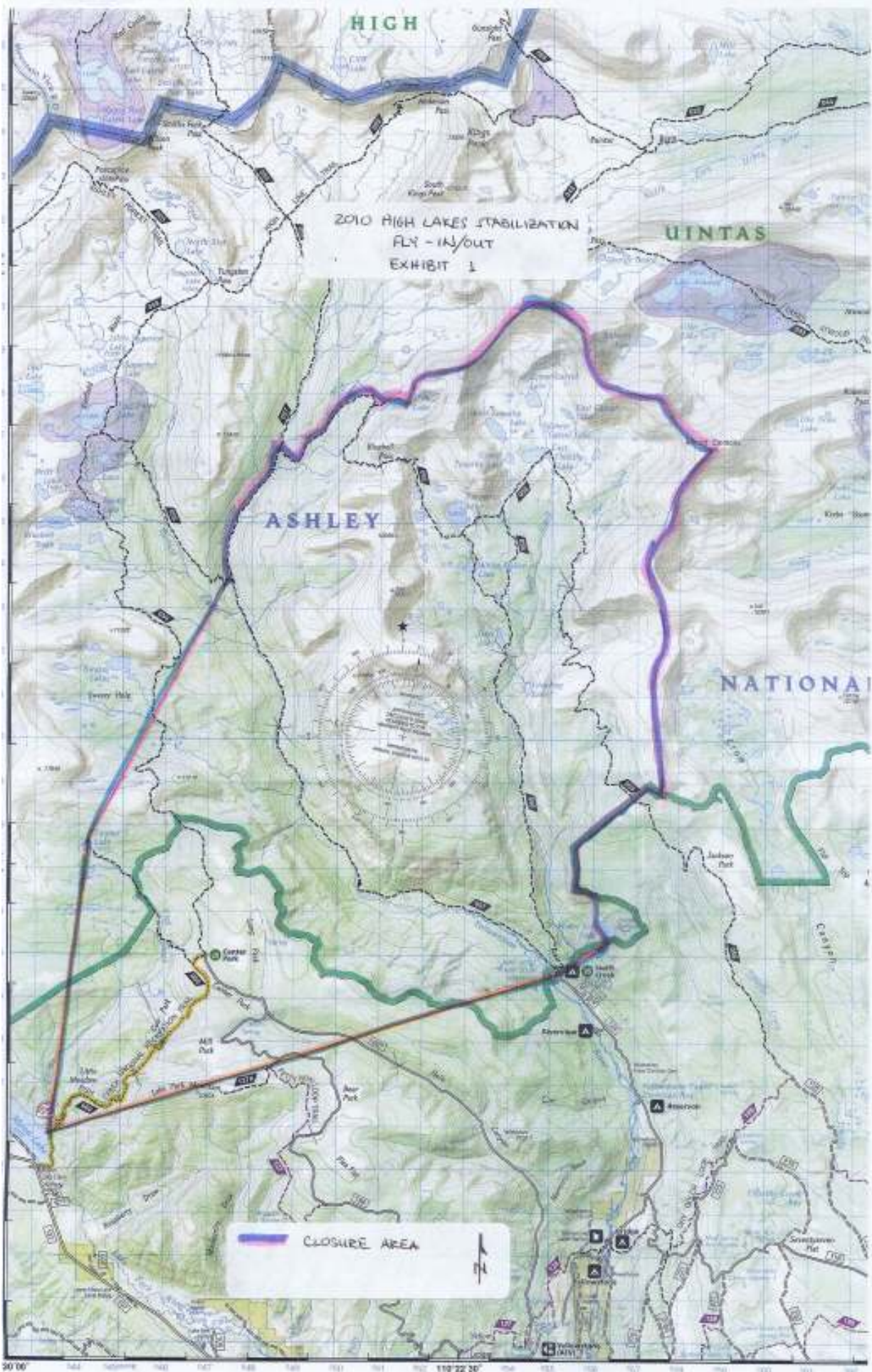
Vernal, Utah ... The Ashley National Forest has lifted the closure order in the vicinity of Center Park on June 24, 2010. The closure was planned to last from June 2, 2010 through July 2, 2010 for public safety while supplies were flown into the Swift Creek Basin from Mill Park in support of the High Lakes Stabilization Project.

The area closed for public safety was located under the helicopter flight path that was used to transport heavy equipment and supplies to work areas at Deer and East Timothy Lakes in the Swift Creek Basin. This closure was needed due to the remote possibility of load detachment while in flight.

Swift Creek Basin is closed under a separate closure order for the period from May 3, 2010 until September 30, 2010. Please check with the Duchesne/Roosevelt Ranger District for current information.

If you are planning a trip to the eastern High Uintas Wilderness Area this summer, please call ahead to ensure areas are open and accessible. The Forest anticipates another short duration closure of this area in August or September in order to fly equipment out of work locations at Deer and East Timothy lake when work is complete.

The area now open with the exception of the Swift Creek Basin begins at the junction point of the east shoreline of Moon Lake and Fish Creek, heading almost due north to Toquer Lake, then north northeast to the junction of Forest System (FS) Trail #058 and #057 and along the western edge of FS Trail #057 (including FS Trail#057) to the junction of FS Trail #057 and FS Trail #055, and along the northern edge of FS Trail #055 (including FS Trail #055), to the northern shoreline of Milk Lake (including Milk Lake), north approximately .34 mile, then east to a peak approximately 1.5 miles northeast of Milk Lake and on the rim of the Swift Creek drainage, then heading east along the northern rim of the Swift Creek Drainage to Mount Emmons, then south along the same rim to the High Uintas Wilderness boundary, then, southwest along the High Uintas Wilderness boundary to due north of 300 feet from the west shoreline of Water Lily Lake (excluding Water Lily Lake and 300 feet of the western shoreline of Water Lily Lake), following 300 feet from the western shoreline of Water Lily Lake to the south most part of Water Lily Lake, then, due south to the High Uintas Wilderness boundary, then, to the northern edge of Swift Creek Trailhead and Campground (excluding Swift Creek Trailhead/Campground), and west southwest, back to the starting point at the junction of the east shoreline of Moon Lake and Fish Creek.



Swift Creek Basin will remain closed to public access from May 3, 2010 until the completion of the project around September 30, 2010.

